





Cable Cleats & Support Solutions

	PAGE	PAGE
NYLON P-CLIPS	403	NEW! ALUMINIUM TWO BOLT CLEAT 408
CLINGSTRAP CABLE CLEATS	404	NEW! MULTICLEAT & MULTISTRAP SYSTEM 409 - 412
NEW! TELCLEAT	405	NEW! TREFOIL CLEAT: ALUMINIUM SINGLE BOLT 413
NEW! TWO BOLT CLEAT	406	NEW! TREFOIL CLEAT: POLYAMIDE TWO BOLT 414
NEW! ALUMINIUM CLAW CLEAT	407	

Cable Cleats & Support Solutions

Nylon P-Clips

C

Manufactured from Nylon 6.6, these P-Clips offer good temperature resistance as well as offering high strength. They can be used in a range of industries for permanent or semi-permanent cable fixings.



SPECIFICATIONS

MATERIAL:

Nylon 6.6

COLOUR OPTIONS:

Natural

SERVICE TEMPERATURE RATING:

-20°C to +85°C

FLAMMABILITY:

UL Approval: E97707



PART NO.	SIZE	DIA. (mm)	WIDTH DIA. (mm)	SCREW HOLE DIA. (mm)	PACK QTY
1860	1	3.0	9.5	5.2	100
1861	2	6.0	9.5	5.2	100
1862	3	7.5	9.5	5.2	100
1863	4	9.0	9.5	5.2	100
1864	5	11.0	9.5	5.2	100
1865	6	12.5	9.5	5.2	100
1866	7	16.0	12.7	5.2	50
1867	8	20.0	12.7	5.2	50
1868	9	25.0	12.7	5.2	50
1869	10	34.0	12.7	5.2	50

Cable Cleats & Support Solutions

Clingstrap Cable Cleats: Standard & LSF

C

A comprehensive range of single fixing cable cleats to provide a simple, but strong means of securing cables. Suitable for use with cables or pipes up to 50.8mm in diameter. Available in 12 different sizes in standard Polypropylene material or in a halogen-free material.



SPECIFICATIONS

MATERIAL:
Polypropylene/
LSF Zero Halogen Polypropylene.

SERVICE TEMPERATURE RATING:
-35°C to +105°C

RESISTANCE:
High level of UV resistance.



PART NO. STANDARD	PART NO. LSF	CLEAT SIZE	STUD HOLE SIZE	CABLE RANGE MIN (mm)	CABLE RANGE MAX. (mm)	PACK QTY
CC5	CC5LSF	5	M6	10.1	12.7	1
CC6	CC6LSF	6	M6	12.6	15.2	1
CC7	CC7LSF	7	M6	15.1	17.8	1
CC8	CC8LSF	8	M6	17.7	20.3	1
CC9	CC9LSF	9	M6	20.2	22.8	1
CC10	CC10LSF	10	M6	22.7	25.4	1
CC11	CC11LSF	11	M10	25.3	27.7	1
CC12	CC12LSF	12	M10	27.6	30.5	1
CC14	CC14LSF	14	M10	30.4	35.5	1
CC16	CC16LSF	16	M10	35.4	40.6	1
CC18	CC18LSF	18	M10	40.5	45.7	1
CC20	CC20LSF	20	M10	45.6	50.8	1

SELECTION GUIDE

FOR SWA CABLES - CABLE SIZE mm²

CABLE CORES	1.5	2.5	4.0	6.0	10	16	25
2 CORES	CC5	CC6	CC7	CC7	CC8	CC9	CC12
3 CORES	CC5	CC6	CC8	CC8	CC9	CC10	CC12
4 CORES	CC6	CC6	CC8	CC8	CC9	CC11	CC12
CABLE CORES	35	50	70	95	120	150	185
2 CORES	CC12	CC11	CC12	CC14	CC16	CC18	CC20
3 CORES	CC12	CC12	CC14	CC16	CC18	CC20	-
4 CORES	CC14	CC14	CC16	CC18	CC20	-	-



Telcleats are available in two types; standard black Polythene or dark grey LSF. This one piece, single fixing design, can be double stacked on one fixing. Suitable for use with cables or pipes up to 51mm in diameter. Available in 8 different sizes.



SPECIFICATIONS STANDARD:

MATERIAL:
Polythene

COLOUR:
Black

SERVICE TEMPERATURE RATING:
-70°C to +70°C

RESISTANCE:
Sunlight (UV) and weather resistance. Unaffected by corrosive environments oils and many chemicals.

SPECIFICATIONS LSF:

MATERIAL:
LSF Compound - 385LSF Type
Low smoke and fume emission,
Zero Halogen

COLOUR:
Dark Grey

SERVICE TEMPERATURE RATING:
-70°C to +70°C

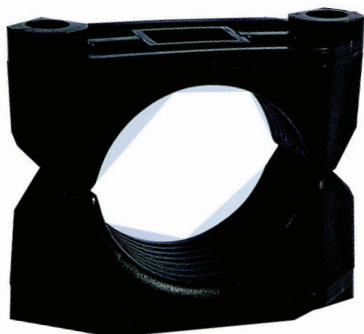
STANDARDS:
Conforms to BS6853
Tested to LUL specification E1042. 1992.
Conforms to the relevant temperature index, smoke emission and toxicity rating.



PART NO. STANDARD	PART NO. LSF	CABLE RANGE MIN. (mm)	CABLE RANGE MAX. (mm)	BOX QTY
385AA01	385LSF01	10.5	14.5	100
385AA02	385LSF02	12.2	16.7	100
385AA03	385LSF03	14.6	19.8	100
385AA04	385LSF04	17.7	24.0	50
385AA05	385LSF05	21.7	28.5	50
385AA06	385LSF06	26.2	34.2	50
385AA07	385LSF07	31.9	41.6	50
385AA08	385LSF08	39.3	51.1	25



Two bolt cleats are a two-piece, two fixing design. They can be double stacked on common fixings. Suitable for use with cables or pipes up to 94mm in diameter. Available in 7 different sizes.



SPECIFICATIONS STANDARD:

MATERIAL:
High Density Nylon 66

COLOUR:
Black

SERVICE TEMPERATURE RATING:
-20°C to +90°C

RESISTANCE:
Sunlight (UV) and weather resistance. Unaffected by corrosive environments oils and many chemicals.

SPECIFICATIONS LSF:

MATERIAL:
LSF - Low Smoke Zero Halogen

COLOUR:
Black

SERVICE TEMPERATURE RATING:
-20°C to +90°C

RESISTANCE:
Sunlight (UV) and weather resistance. Unaffected by corrosive environments oils and many chemicals.



PART NO. STANDARD	PART NO. LSF	CABLE RANGE MIN. (mm)	CABLE RANGE MAX. (mm)	BOX QTY
374AA01	374LSF01	50	58	10
374AA02	374LSF02	56	64	10
374AA03	374LSF03	62	70	10
374AA04	374LSF04	68	76	10
374AA05	374LSF05	74	82	10
374AA06	374LSF06	80	88	10
374AA07	374LSF07	86	94	10

Cable Cleats & Support Solutions

Aluminium Claw Cleat: Standard & Epoxy Coated

A



Aluminium claw cleats are a two-piece, single fixing design. They can be stacked to a maximum of 3 on one fixing. Suitable for use with cables or pipes up to 51mm in diameter. Available in 9 different sizes.



SPECIFICATIONS:

MATERIAL:

Aluminium/Epoxy Coated

SERVICE TEMPERATURE RATING:

-60°C to +100°C

RESISTANCE:

For indoor dry normal industrial use or outdoor unpolluted areas.



PART NO. STANDARD	PART NO. EPOXY COATED	STUD SIZE	CABLE RANGE MIN. (mm)	CABLE RANGE MAX. (mm)	BOX QTY
370BA01	370BB01	M10	10	13	20
370BA02	370BB02	M10	13	16	20
370BA03	370BB03	M10	16	19	20
370BA04	370BB04	M10	19	22	20
370BA05	370BB05	M10	22	25	20
370BA06	370BB06	M10	25	32	20
370BA07	370BB07	M10	32	38	20
370BA08	370BB08	M10	38	44	20
370BA09	370BB09	M10	44	51	20



Aluminium two bolt cleats are a two-piece, two fixing design. They can be double stacked on common fixings, and can be used for all types of cable routes. Suitable for use with cables or pipes up to 159mm in diameter. Available in 14 different sizes.



SPECIFICATIONS:

MATERIAL:

Aluminium/Epoxy Coated

SERVICE TEMPERATURE RATING:

-60°C to +100°C

RESISTANCE:

For indoor dry normal industrial use or outdoor unpolluted areas.



PART NO. STANDARD	PART NO. EPOXY COATED	STUD SIZE	CABLE RANGE MIN. (mm)	CABLE RANGE MAX. (mm)	BOX QTY
370BA10	370BB10	M10	51	57	10
370BA11	370BB11	M10	57	64	10
370BA12	370BB12	M10	64	70	10
370BA13	370BB13	M10	70	76	10
370BA14	370BB14	M12	76	83	10
370BA15	370BB15	M12	83	89	10
370BA16	370BB16	M12	89	95	10
370BA17	370BB17	M12	95	101	10
370BA18	370BB18	M12	101	108	10
370BA19	370BB19	M12	108	114	10
370BA30	--	M12	115	121	10
370BA33	--	M12	133	140	10
370BA35	--	M12	146	152	10
370BA36	--	M12	152	159	10

Cable Cleats & Support Solutions

Multicleat & Multistrap System

A



The Multicleat/Multistrap system utilises a strap with rounded edges offering safe, fast installation to the user whilst maintaining excellent performance characteristics. It is designed for trefoil, single, quad and bundled cable installations. Multicleat bases are available as either single or two fixing designs, available in a variety of materials and finishes. Operating temperature -60°C to +100°C.

Multistraps or Multicleats with either cast iron or stainless steel bases will survive an excursion to +1000°C for up to 2 hours. However, any protective coating of the cast iron base could be adversely affected.

MULTICLEAT PLUS - STANDARD & HEAVY DUTY - ALUMINIUM BASE



Multicleat Plus, available in standard and heavy duty with aluminium base. Suitable for single or trefoil cable formations.

- 24 to 145 mm diameter cables in trefoil groups in 10 sizes.
- Exceptional overlapping ranges.
- Can be used for all types of cable routes.
- Non-magnetic materials used throughout, except for cast iron bases.

SPECIFICATIONS:

MATERIAL:
Aluminium Base

SERVICE TEMPERATURE RATING:
-60°C to +100°C

FOR SINGLE CABLE

PART NO. STANDARD	PART NO. HEAVY DUTY	CABLE RANGE MIN. (mm)	CABLE RANGE MAX. (mm)	PACK QTY
378AB01	--	24	34	5
378AB02	--	30	41	5
378AB03	--	37	47	5
378AB04	--	43	54	5
--	378AB29	85	110	5
378AB09	378AB59	105	120	5

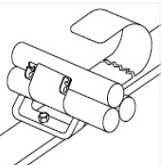
FOR TREFOIL CABLE

PART NO. STANDARD	PART NO. HEAVY DUTY	CABLE RANGE MIN. (mm)	CABLE RANGE MAX. (mm)	PACK QTY
378AB01	378AB51	24	34	5
378AB02	378AB52	30	41	5
378AB03	378AB53	37	47	5
378AB04	378AB54	43	54	5
378AB05	378AB55	50	60	5
378AB06	378AB56	56	67	5
378AB07	378AB57	63	73	5
378AB08	378AB58	69	80	5
--	378AB36	72	85	5
--	378AB37	82	95	5
--	378AB38	92	105	5
--	378AB39	102	115	5
--	378AB40	112	125	5
--	378AB41	122	135	5
--	378AB42	132	145	5

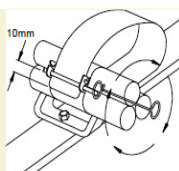


MULTICLEAT PLUS - INSTALLATION SEQUENCE

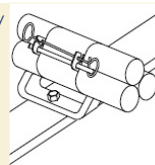
Fasten base to support with M10 fixings. Loop strap through base and around cables. Standard duty = 2 loops, Heavy duty = 3 loops.



Pull slack into outer loop. Insert split pin in clip from right hand side around outer layer of strap about 10mm from end. To tension strap rotate key clockwise.



Swing key over and engage in slots in clip.



MULTICLEAT PLUS - STANDARD & HEAVY DUTY - ALUMINIUM BASE EPOXY COATED



FOR SINGLE CABLE

PART NO. STANDARD	PART NO. HEAVY DUTY	CABLE RANGE MIN. (mm)	CABLE RANGE MAX. (mm)	PACK QTY
-	378AD29	85	110	5
378AD09	378AD59	105	120	5

Multicleat Plus, available in standard and heavy duty with aluminium base - epoxy coated. Suitable for single or trefoil cable formations.

- 24 to 145 mm diameter cables in trefoil groups in 10 sizes.
- Exceptional overlapping ranges.
- Can be used for all types of cable routes.

FOR TREFOIL CABLE

PART NO. STANDARD	PART NO. HEAVY DUTY	CABLE RANGE MIN. (mm)	CABLE RANGE MAX. (mm)	PACK QTY
378AD01	378AD51	24	34	5
378AD02	378AD52	30	41	5
378AD03	378AD53	37	47	5
378AD04	378AD54	43	54	5
378AD05	378AD55	50	60	5
378AD06	378AD56	56	67	5
378AD07	378AD57	63	73	5
378AD08	378AD58	69	80	5
-	378AD39	72	85	5

SPECIFICATIONS:

MATERIAL:
Aluminium Base, Epoxy Coated.

SERVICE TEMPERATURE RATING:
-60°C to +100°C



MULTICLEAT PLUS - STANDARD & HEAVY DUTY - STAINLESS STEEL BASE



Multicleat Plus, available in standard and heavy duty with stainless steel base. Suitable for single or trefoil cable formations.



- 24 to 80 mm diameter cables in trefoil groups in 10 sizes.
- Exceptional overlapping ranges.
- Can be used for all types of cable routes.

SPECIFICATIONS:

MATERIAL:
Stainless Steel Base

SERVICE TEMPERATURE RATING:
-60°C to +100°C

FOR SINGLE CABLE

PART NO. STANDARD	PART NO. HEAVY DUTY	CABLE RANGE MIN. (mm)	CABLE RANGE MAX. (mm)	PACK QTY
378PF09	378PF59	105	120	5

FOR TREFOIL CABLE

PART NO. STANDARD	PART NO. HEAVY DUTY	CABLE RANGE MIN. (mm)	CABLE RANGE MAX. (mm)	PACK QTY
378PF01	378PF51	24	34	5
378PF02	378PF52	30	41	5
378PF03	378PF53	37	47	5
378PF04	378PF54	43	54	5
378PF05	378PF55	50	60	5
378PF06	378PF56	56	67	5
378PF07	378PF57	63	73	5
378PF08	378PF58	69	80	5



MULTISTRAP PLUS - STANDARD & HEAVY DUTY



Multistrap is a strap complete with a tensioning clip, securing pin and winding key all made from highly corrosion resistant, non-magnetic stainless steel. For use as in intermediate support between Multicleats.



- 24 to 145 mm diameter cables in trefoil groups in 15 sizes.
- Used to bind the cables together.
- Standard duty, designed to have 2 loops of 0.38 mm thick strap around the cables.
- Heavy duty, designed to have 3 loops of 0.38 mm thick strap around the cables.

SPECIFICATIONS:

MATERIAL:
Stainless Steel

SERVICE TEMPERATURE RATING:
-60°C to +100°C

FOR TREFOIL CABLE				
PART NO. STANDARD	PART NO. HEAVY DUTY	CABLE RANGE MIN. (mm)	CABLE RANGE MAX. (mm)	PACK QTY
377AB01	377AB51	24	34	5
377AB02	377AB52	30	41	5
377AB03	377AB53	37	47	5
377AB04	377AB54	43	54	5
377AB05	377AB55	50	60	5
377AB06	377AB56	56	67	5
377AB07	377AB57	63	73	5
377AB08	377AB58	69	80	5
-	377AB36	72	85	5
-	377AB37	82	95	5
-	377AB38	92	105	5
-	377AB39	102	115	5
-	377AB40	112	125	5
-	377AB41	122	135	5
-	377AB42	132	145	5

LSOH LINERS

Liners can be supplied for use with multicleats and multistraps and conform to BS6853.



PART NO.	SUITABLE FOR MULTICLEAT TYPE
377LSF01	01 - 04 inc. / 51 - 54 inc.
377LSF02	05 - 09 inc. / 36 - 37 inc. / 55 - 59 inc.

Cable Cleats & Support Solutions

Trefoil Cleat: Aluminium Single Bolt

A



Aluminium single two bolt trefoil cleats are suitable for cables in trefoil groups from cable diameters 24mm to 76mm. They can be used with all types of cable routes, and are suitable for use at a maximum fault level of 30kA rms. Single fixing, with a plain finish which is suitable for indoor dry, industrial use, or in outdoor unpolluted areas.

SPECIFICATIONS:

MATERIAL:
Aluminium

SERVICE TEMPERATURE RATING:
-60°C to +100°C

STANDARDS:
BS 1490 - 1988 LMC



PART NO.	CABLE RANGE MIN. (mm)	CABLE RANGE MAX. (mm)	BOX QTY
376AC01	24	25	10
376AC02	25	27	10
376AC03	27	28	10
376AC04	28	30	10
376AC05	30	32	10
376AC06	32	34	10
376AC07	34	35	10
376AC08	35	36	10
376AC09	36	38	10
376AC10	38	40	10
376AC11	40	41	10
376AC12	41	43	10
376AC13	43	44	10
376AC14	44	46	10
376AC15	46	48	10
376AC16	48	49	10
376AC17	49	51	10
376AC18	51	53	10
376AC19	53	54	10
376AC20	54	55.5	10
376AC21	55.5	57	10
376AC22	57	59	10
376AC23	59	60	10
376AC24	60	62	10
376AC25	62	63.5	10
376AC26	63.5	65	10
376AC27	65	66.5	10
376AC28	66.5	68	10
376AC29	68	70	10
376AC30	70	71.5	10
376AC31	71.5	73	10
376AC32	73	74.5	10
376AC33	74.5	76	10



This trefoil two bolt cleat is designed for cleating three single cables in a trefoil configuration, where low, medium or high short circuit withstand levels are required. The width of the clamping area provides a controlled pressure on the cable and avoids damage to the insulation. Its unique blend of chemical, electrical and physical properties makes it suitable for a wide range of industrial applications.



SPECIFICATIONS:

MATERIAL:

Glass Fibre reinforced Polyamide, Fire-Resistant, high UV and chemical resistance. Halogen-Free.

SERVICE TEMPERATURE RATING:

-40°C to +125°C
(with short periods at +225°C)

RESISTANCE:

UV, Ozone, Frost.
Resistant to oils, acids, salts and other aggressive materials. Resistant to ionizing radiation - ideal for use in nuclear power plants.

STANDARDS:

Approved to BS EN 61949: 2009 Cat 6.4.4
Tested by UL, Kema, Eaton & Centrilab.

PART NO.	CABLE RANGE MIN. (mm)	CABLE RANGE MAX. (mm)	PACK QTY
U375AB01	27	38	36
U375AB02	38	51	36
U375AB03	51	69	16
U375AB04	69	90	16
U375AB05	90	118	9

